

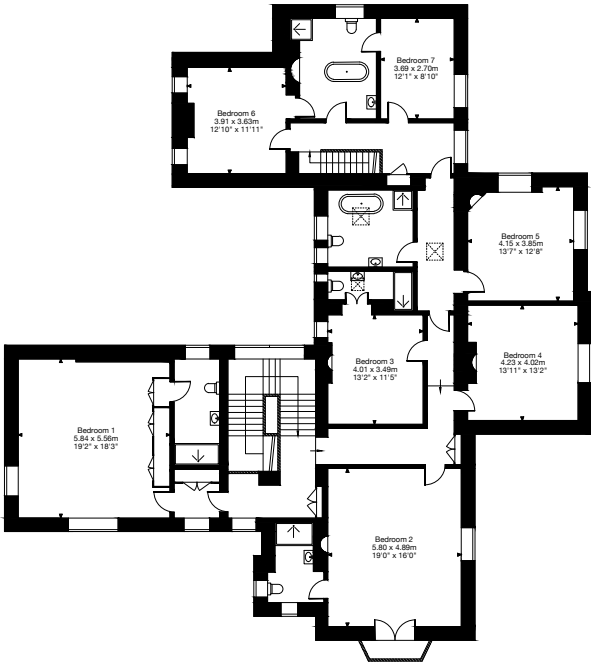
Hillmarton Manor, Hilmarton, Calne SN11 8SB

Gross Internal Area (Approx.)

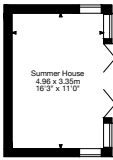
Main House = 691 sq m / 7,437 sq ft

Outbuildings and Stores = 127 sq m / 1,367 sq ft

Total Area = 818 sq m / 8,804 sq ft



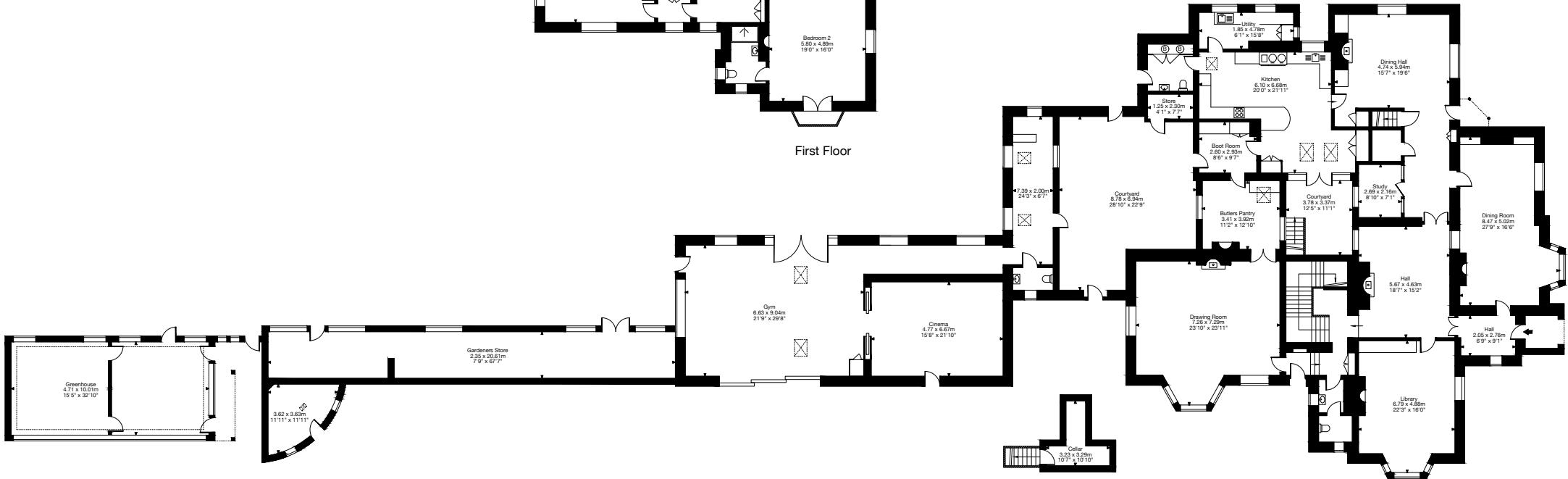
First Floor



Outbuilding



Outbuilding
(Not shown in actual location or orientation.)



Cellar

Ground Floor

Capture Property Marketing 2026. Drawn to RICS guidelines. Not drawn to scale. Plan is for illustration purposes only. All features, door openings, and window locations are approximate. All measurements and areas are approximate and should not be relied on as a statement of fact.

